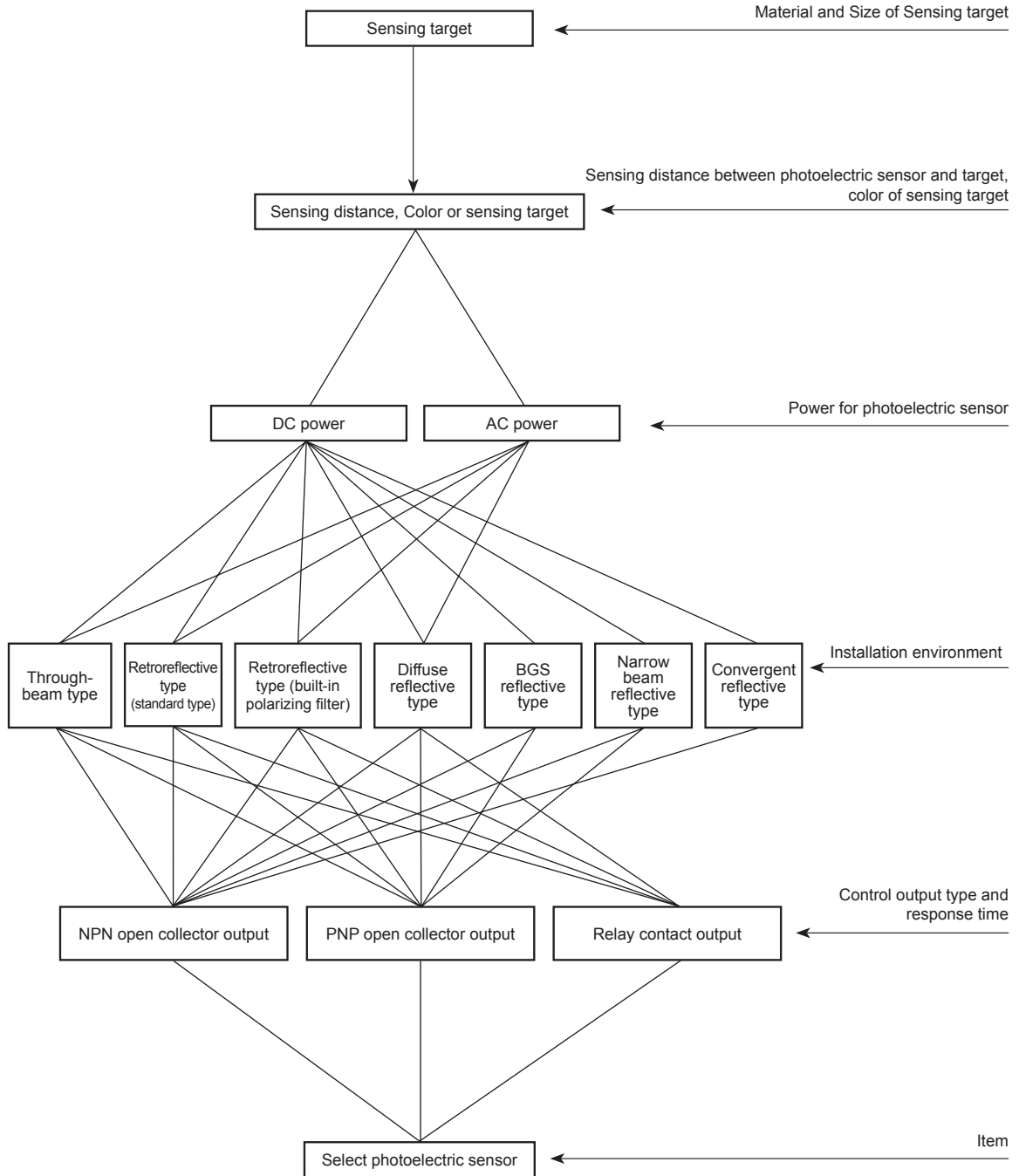


Photoelectric Sensor Selection

■ Selection Method For Photoelectric Sensor



Ordering Information

Ordering Information (Photoelectric Sensor)

BEN 10 M - T F R [] - [] - [] - **P**

Item: BEN 10 M - T F R [] - [] - [] - P

※1: 'S' represents lateral sensing type.
'P' represents plastic case type.

NPN/PNP	P	PNP open collector output
	No mark	NPN open collector output
Connection type	No mark	Cable type
	C	Connector type
Timer	T	Built-in Timer
	No mark	Standard type
Diffuse/Narrow beam type	No mark	Reflective type (diffuse type)
	N	Narrow beam type (BR, BRP series only)
Emitter/Receiver	1	Emitter
	2	Receiver
Control output	R	Contact output (relay)
	T	Solid-state output (transistor)
Power supply	D	DC power
	F	Power supply built-in
	S	Adjuster included (BUP series only)
Sensing type	D	Diffuse reflective type
	M	Retroreflective type (standard type)
	P	Retroreflective type (built-in polarizing filter)
	T	Through-beam type
Sensing distance unit	Number	Sensing distance (BUP series only)
	M	m
Sensing distance	No mark	mm
	Number	Sensing distance
	BX	
	BEN	
	BA	
	※1 BPS	
	※1 BM/BMS	Photoelectric sensor Series
	※1 BR/BRP	
	※1 BUP/BUM	
	※1 BY/BYS	
	BYD	

BJN 50 [] - **N D T** [] - [] - **P**

Item: BJN 50 [] - N D T [] - [] - P

NPN/PNP	P	PNP open collector output
	No mark	NPN open collector output
Connection type	No mark	Cable type
	C	Connector type
Emitter/Receiver	1	Emitter
	2	Receiver
Operation mode	L	Light ON
	D	Dark ON
Control output	No mark	Mode switching
	T	Solid-state output (transistor)
Power supply	D	DC power
Sensing type	D	Diffuse reflective type
	P	Retroreflective type (built-in polarizing filter)
	T	Through-beam type
	N	Narrow beam reflective type
	B	BGS reflective type
	L	Convergent reflective type
Sensing distance unit	M	m
Sensing distance	No mark	mm
	Number	Sensing distance
	BJ	Small long sensing distance photoelectric sensor
	BJN	Micro-spot photoelectric sensor
	BJG	Transparent sensing photoelectric sensor
	BTS	Ultra-compact amplifier built-in type
	BTF	Ultra-thin photoelectric sensor

※ [] This information is intended for product management of through-beam type models. It is not required when ordering a model.

※ This ordering information is only for reference. For ordering a specific model, check the ordering information of the model.

※ There is no photomicro sensor (BS5 series), push button type photomicro sensor (BS5-P series) and liquid level sensor (BL series) in this ordering information.

(A) Photoelectric Sensors

(B) Fiber Optic Sensors

(C) Door/Area Sensors

(D) Proximity Sensors

(E) Pressure Sensors

(F) Rotary Encoders

(G) Connectors/ Connector Cables/ Sensor Distribution Boxes/ Sockets

(H) Temperature Controllers

(I) SSRs / Power Controllers

(J) Counters

(K) Timers

(L) Panel Meters

(M) Tacho / Speed / Pulse Meters

(N) Display Units

(O) Sensor Controllers

(P) Switching Mode Power Supplies

(Q) Stepper Motors & Drivers & Controllers

(R) Graphic/ Logic Panels

(S) Field Network Devices

(T) Software