

Pay attention to the following when installed:

- Do not let conductive substances from panel cut-out or wiring ducts enter into LP.
- Make sure to allow enough space to handle the LP.

Secure enough space to maintain inside temperature and humidity of the panel when you mount LP.

2.5 USB driver installation

GP/LP USB Driver' is driver for communication PC and LP-S070 by USB cable.

Before installing 'GP/LP USB Driver', visit our homepage(www.autonics.com) and download setup file.

Downloaded zip file name is as following.

GP_LP_Series.inf, GP_LP_Series.sys

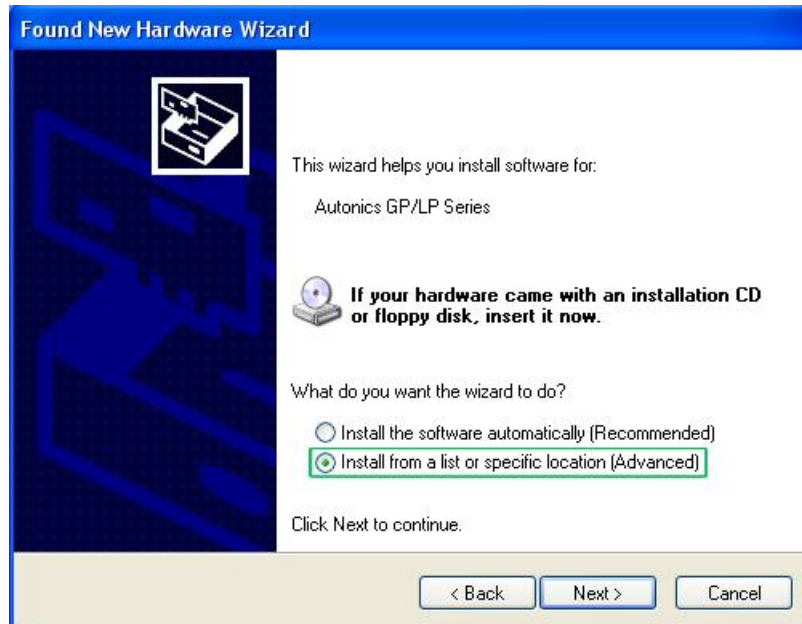
2.5.1 Install with found new hardware wizard

1st Connect LP-S070 to PC with USB cable and 'Found New Hardware Wizard' operates.

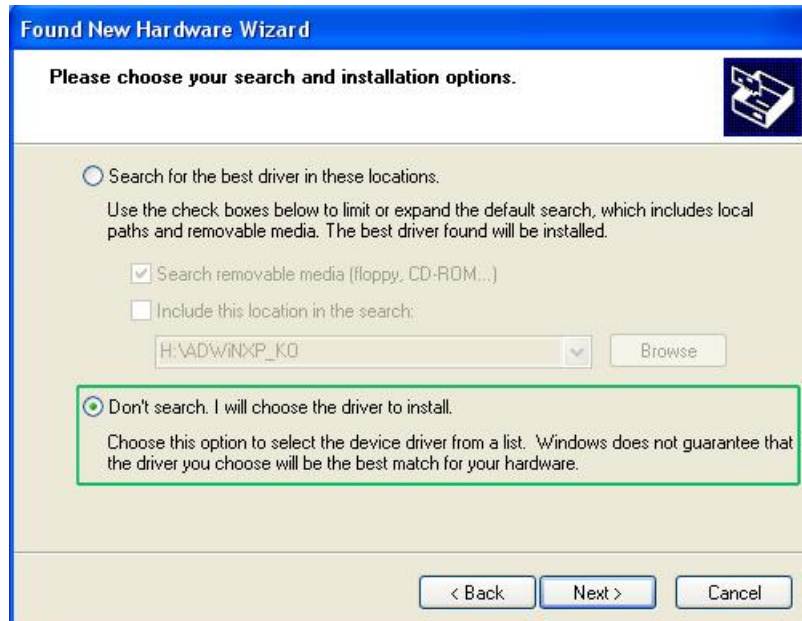
Select 'No, not this time' and click 'Next'.



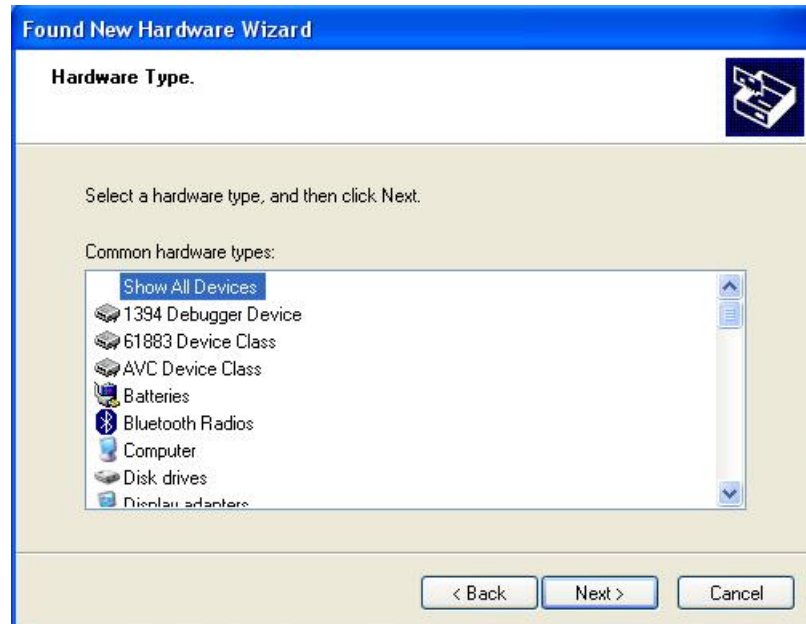
2nd Select 'Install from a list or specific location (Advanced)' and click 'Next'.



3rd Select 'Don't search. I will choose the driver to install.' and click 'Next'.



- 4th Select 'Show All Devices' for common hardware type and click 'Next'.

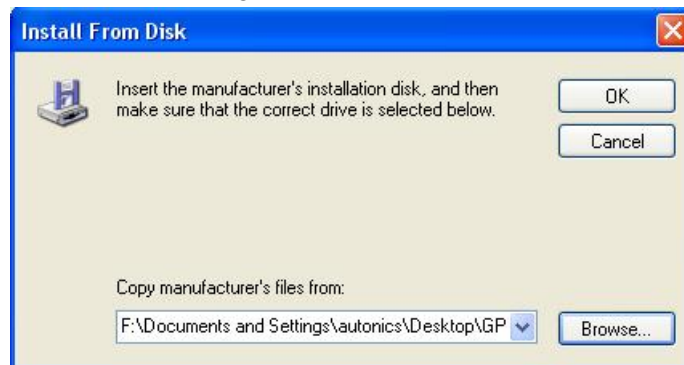


- 5th Select '(Standard system devices)' and 'HID-compliant game controller'.

- 6th Click 'Have Disk' and 'Install From Disk' dialog box appears.



7th Click 'Browse', designate GP/LP USB Driver folder and click 'OK'.



8th Select 'GP/LP Series' as below feature and click 'Next'.



During installing driver, if following message appears, click 'Yes' and continues installing driver.



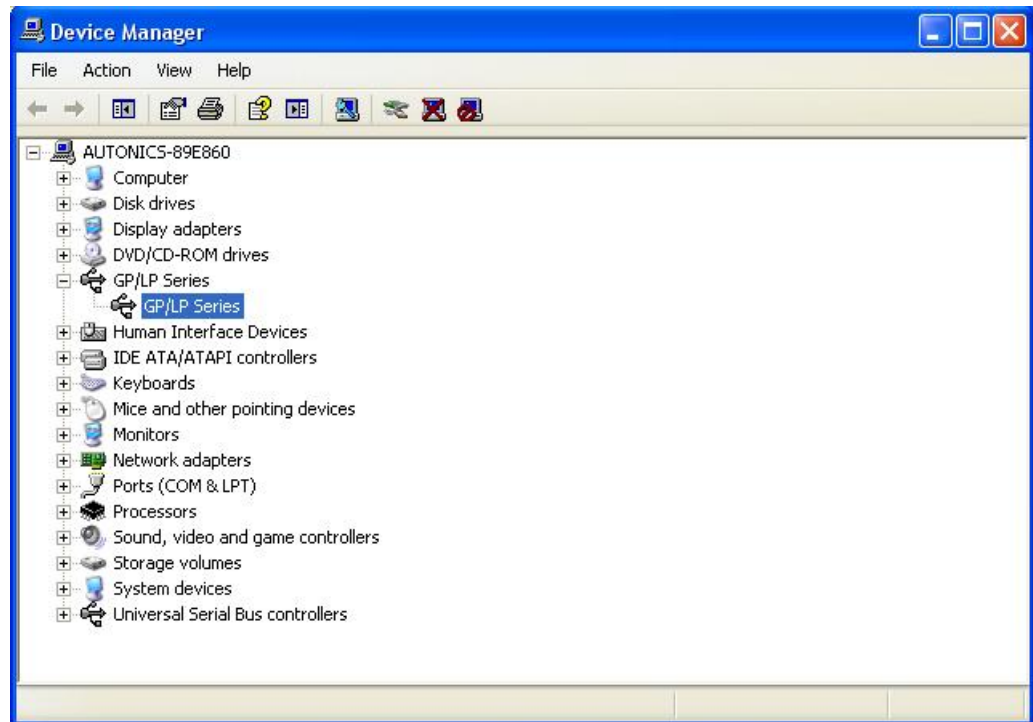
9th Processes installing GP/LP USB Driver.



10th Click 'Finish' and completes installing driver.



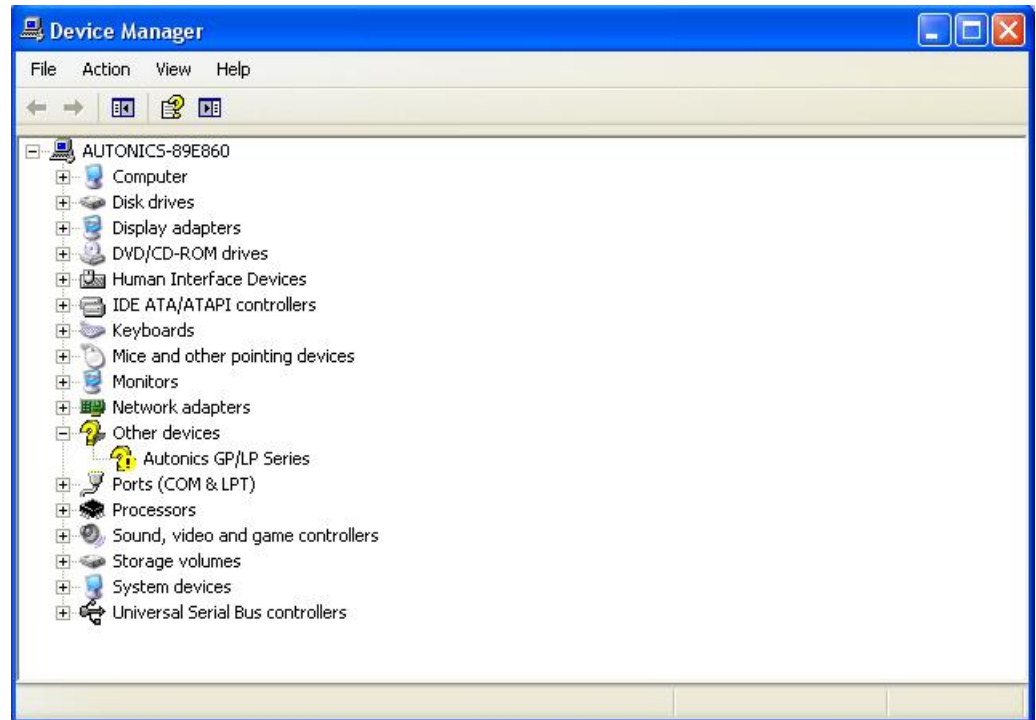
11th You can check installed driver at [Start]-[Control Panel]-[System]-[Hardware]-[Device Manager].



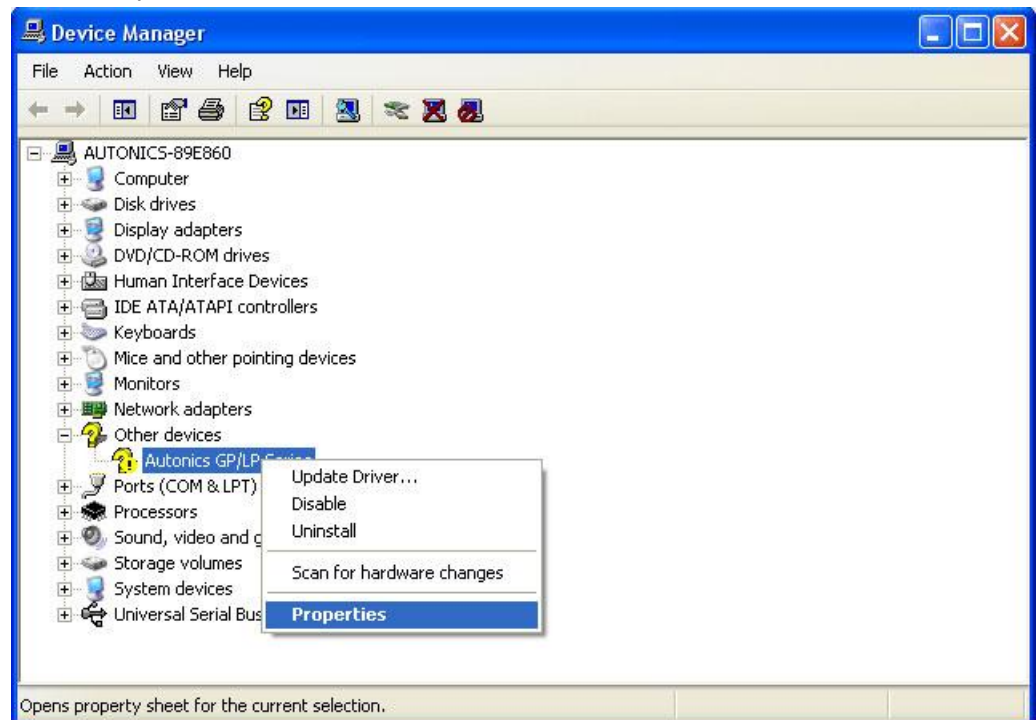
2.5.2 Install with device manager

1st If 'Found New Hardware Wizard' does not operate, you can install USB driver at [Start]-[Control Panel]-[System]-[Hardware]-[Device Manager].

Uninstalled driver displays '?' as following feature.



2nd Click 'Autonics GP/LP Series' with right mouse button and pop-up menu appears. Select 'Properties'.



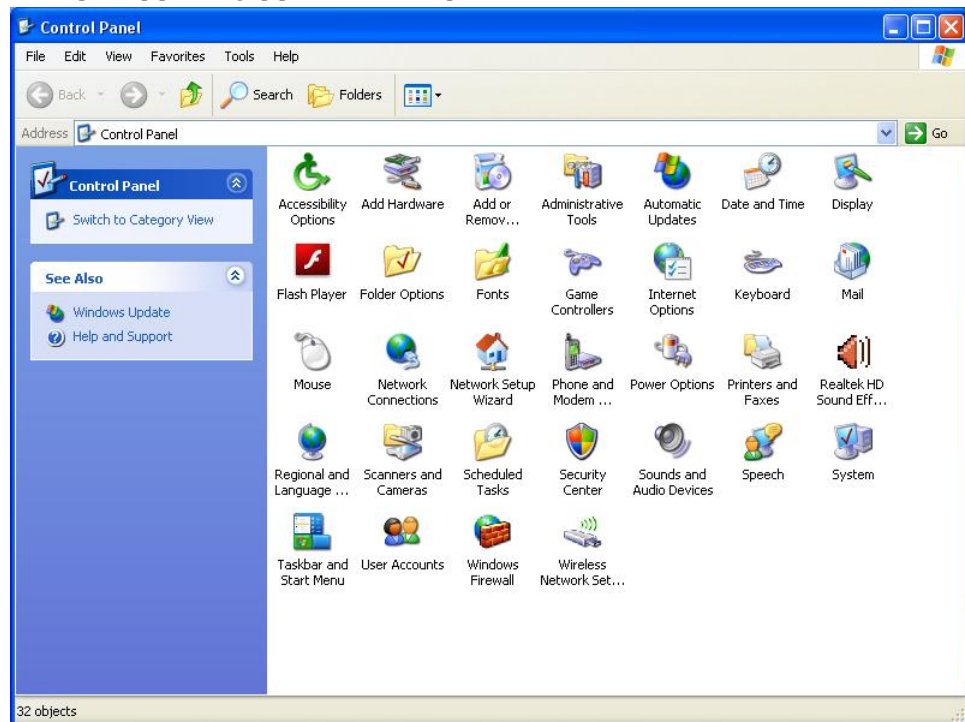
3rd 'Autonics GP/LP Series Properties' dialog box appears. Click 'Reinstall Driver'.



4th 'Found New Hardware Wizard' operates. Next steps are same as '2.5.1 Install with found new hardware wizard' and please refer this.

2.5.3 Install with control panel

1st Enter [Start]-[Settings]-[Control Panel] and click 'Add Hardware'.



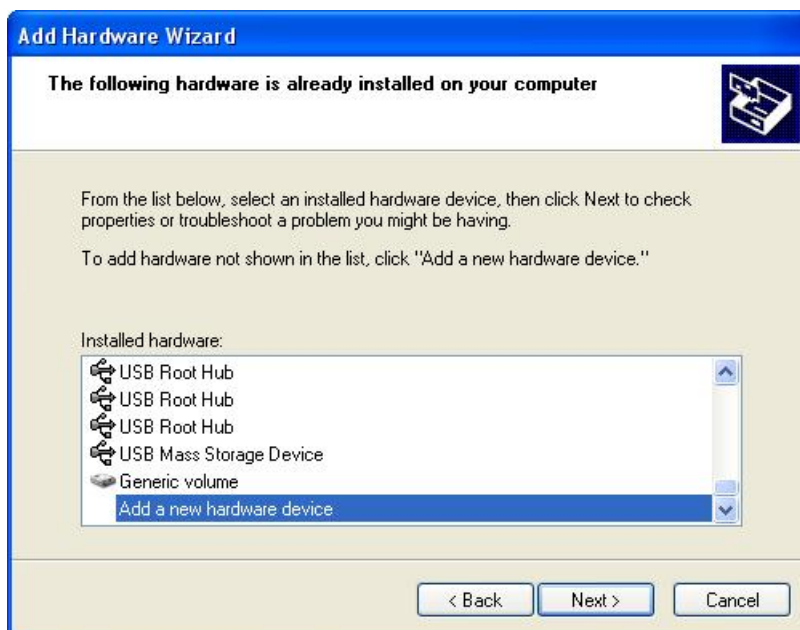
2nd 'Add Hardware Wizard' operates. Click 'Next'.



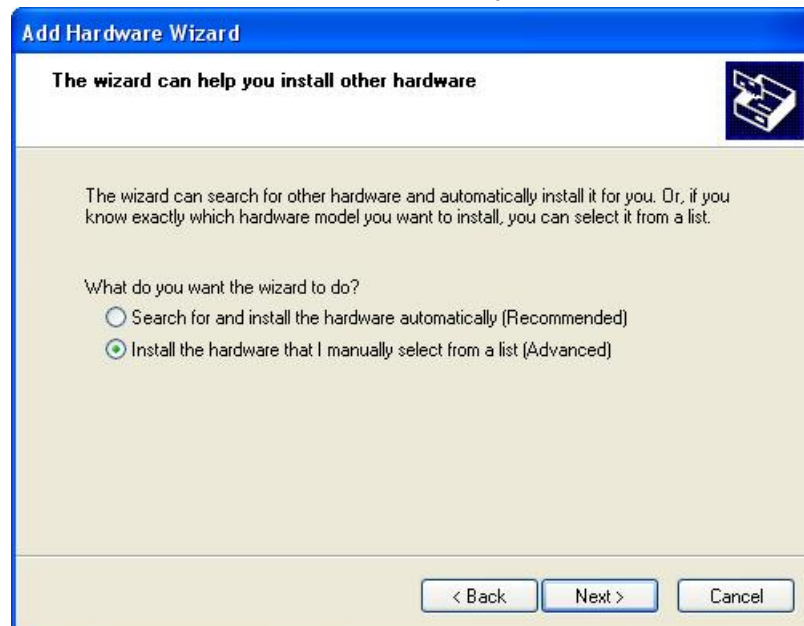
- 3rd Connect LP-S070 and PC with USB cable and select 'Yes, I have already connected the hardware' and click 'Next'.



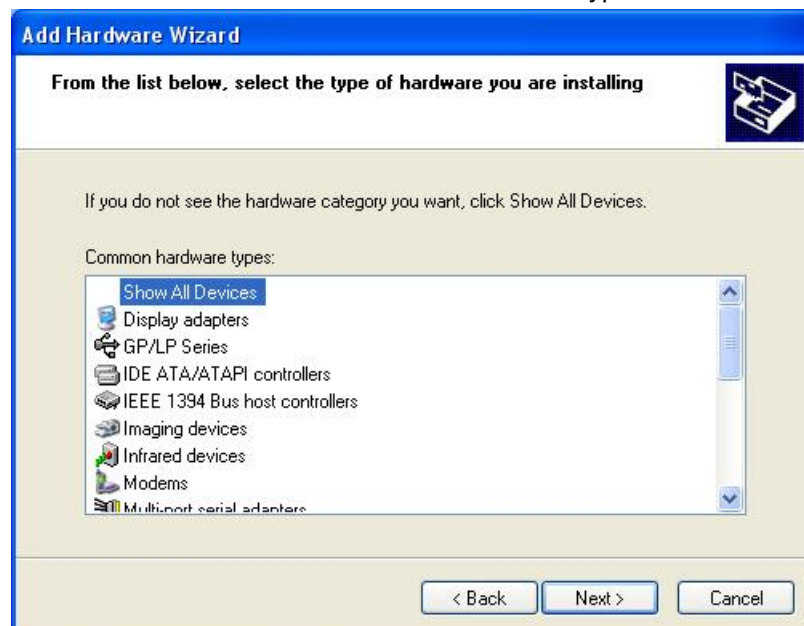
- 4th Select 'Add a new hardware device' and click 'Next'.



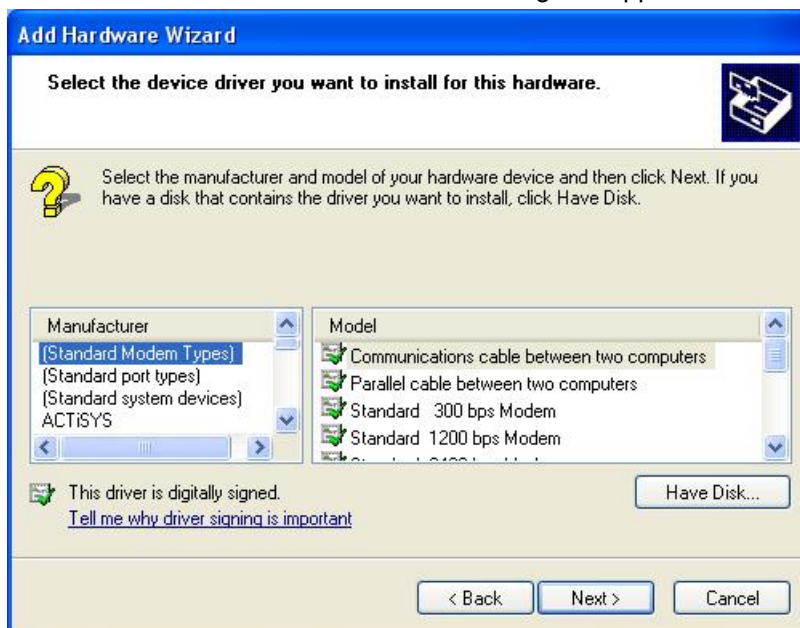
5th Select 'Install the hardware that I manually selected from a list' and click 'Next'.



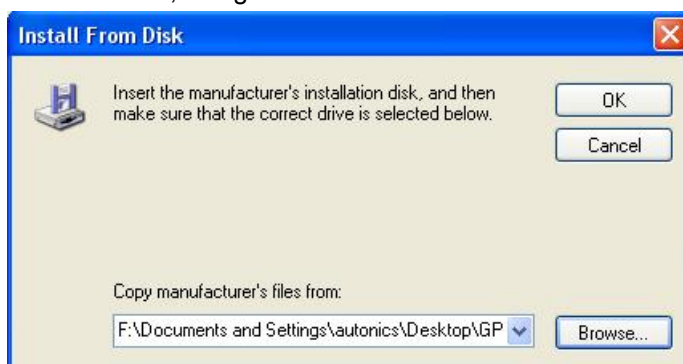
6th Select 'Show All Devices' for common hardware type and click 'Next'.



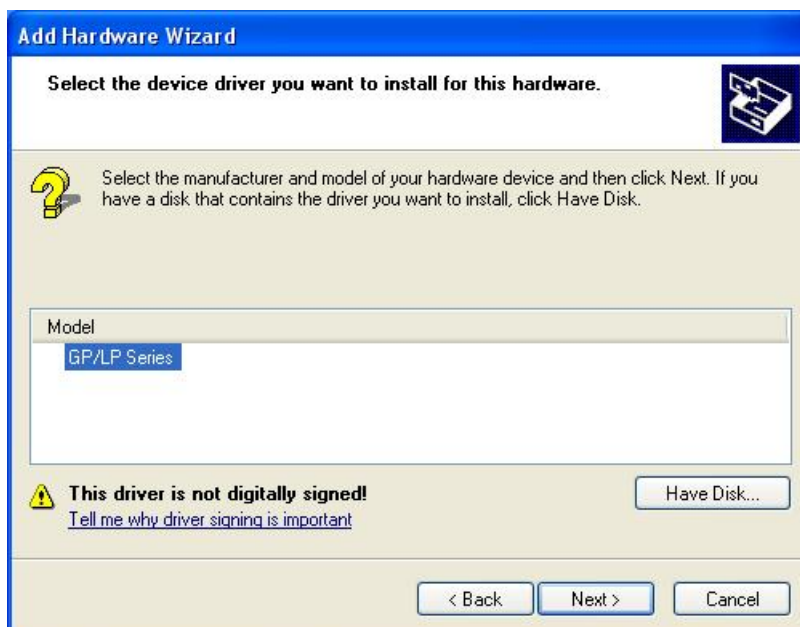
7th Click 'Have Disk' and 'Install From Disk' dialog box appears.



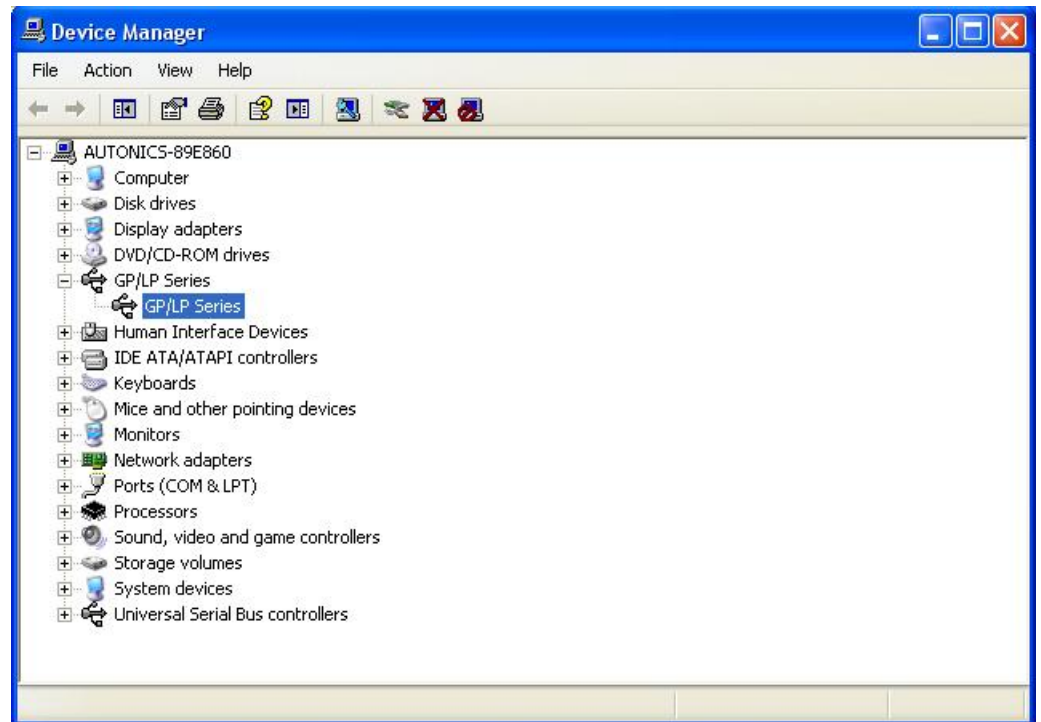
8th Click 'Browse', designate GP/LP USB Driver folder and click 'OK'.



9th Select 'GP/LP Series' as below feature and click 'Next'.

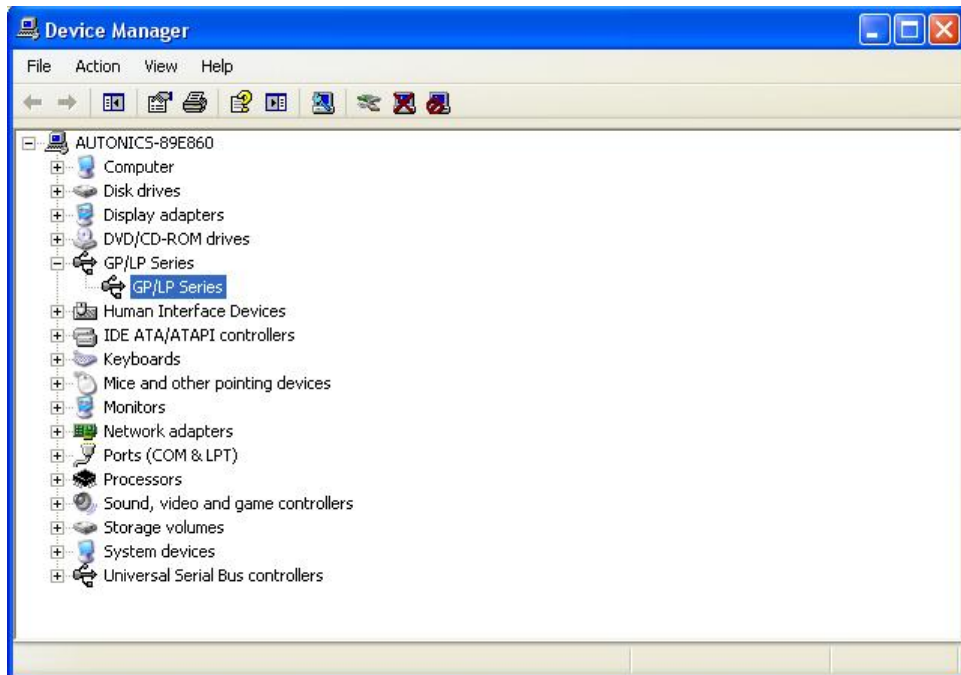


10th You can check installed driver at [Start]-[Control Panel]-[System]-[Hardware]-[Device Manager].

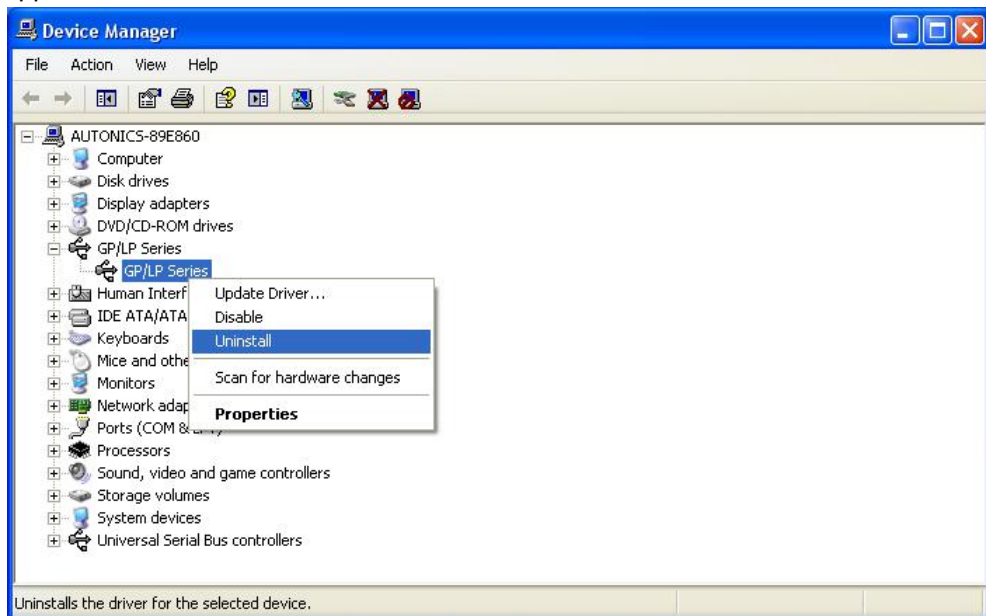


2.5.4 Remove GP/LP USB driver

- 1st Connect LP-S070 to PC with USB cable and enter [Start]-[Settings]-[Control Panel]-[System]-[Hardware]-[Device Manager].



- 2nd Select GP/LP Series device and click with right mouse button and pop-up menu appears. Select 'Uninstall' menu.

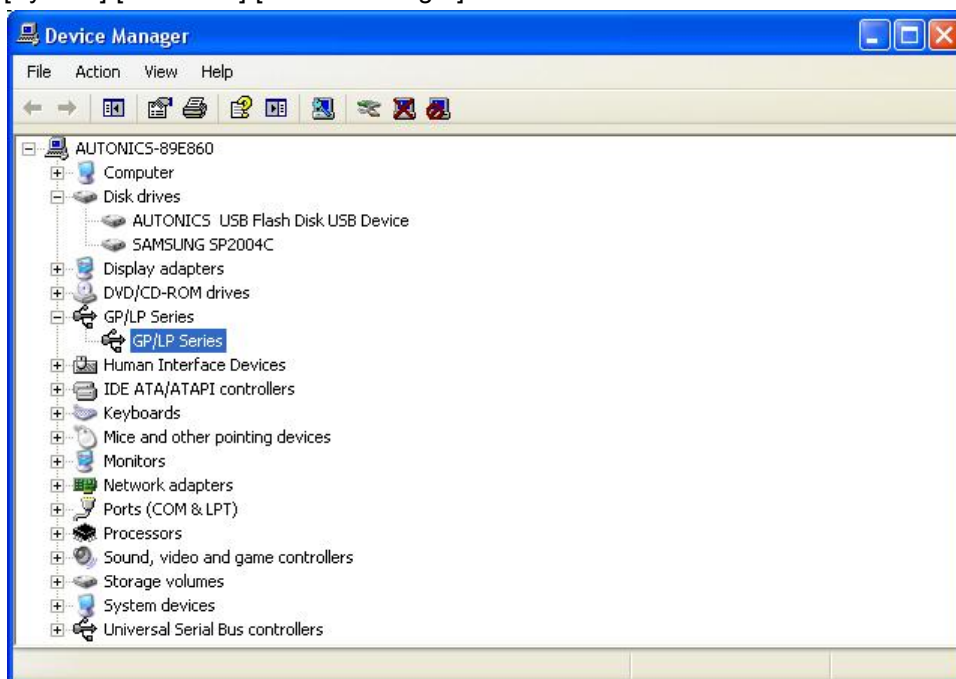


3rd 'Confirm Device Removal' dialog box appears. Click 'OK' to remove the driver.

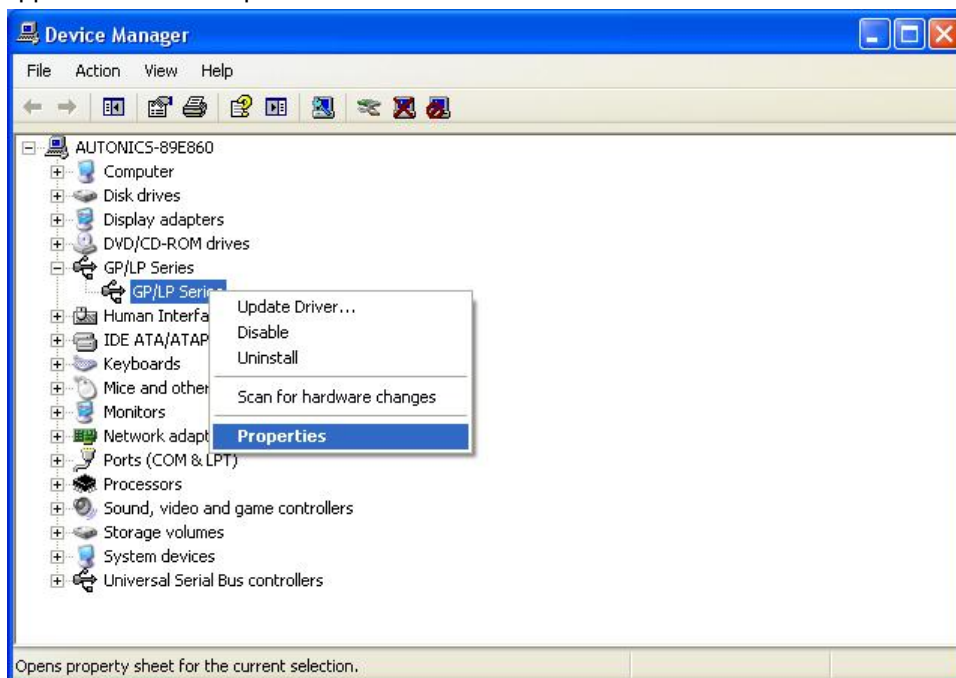


2.5.5 Update GP/LP USB driver

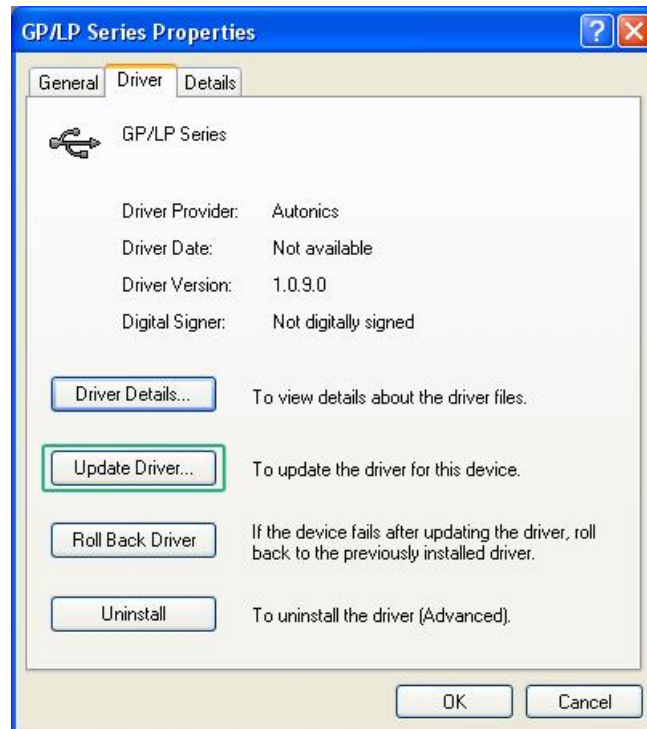
- 1st Connect LP-S070 and PC with USB cable and enter [Start]-[Settings]-[Control Panel]-[System]-[Hardware]-[Device Manager].



- 2nd Select GP/LP Series device and click with right mouse button and pop-up menu appears. Select 'Properties' menu.



3rd 'GP/LP Series Properties' dialog box appears. Enter to 'Driver' tab and click 'Update Driver' to update driver.



4th 'Driver Update Wizard' operates. Update method is same as '2.5.1 Install with found new hardware wizard'.